

SDS SURVEYORS & ENGINEERS PVT LTD



SDS SURVEYORS & ENGINEERS PVT LTD. | www.sdsepl.in | project@sdsepl.in | info@sdsepl.in

ABOUT US



“SDS SURVEYORS AND ENGINEERS PVT LTD” is a reputed engineering services establishment engaged in providing its services for Topographical Survey, DGPS & GIS Mapping, Foundation Engineering, Geotechnical Investigation Services, Mineral Exploration and Geo-Hydrographical Survey to arena of construction world, Infrastructure and Engineering Industry. SDS ensures smooth operations and on-time deliveries of our agreements by undertaking with assurance an accurate, refined and budgeted in-depth analysis and solutions, crucial to Domain applications required by Design Engineers for design of relevant kind of structures.

Our services comprise of Topographical Survey, Bathymetric Survey, Drone Survey, Geo-technical Investigation, Core Drilling, Geophysical Investigation, Geohydrological Investigation, GI Instrumentation, Load testing, NDT, NABL Lab Testing, Drilling and Grouting, Guniting, on-site technical assistance to allied works, dealing PAN INDIA.



“SUCCESS IS A JOURNEY NOT A FULL STOP”

We, SDS have successfully completed over 100+ projects and counting.... Engaging Survey Works and Geotechnical Investigation for Infrastructure and Engineering Projects across India which includes Highways, Railways, Ports, Industrial and Residential Structures, Dams, Irrigations, Airports and many more.

Deliverance is not the end of our agreement and accountability. We are aware of industry responsibility and endeavor to deliver it with pinpoint accuracy to our assignments. We have a professional team leads that ensures smooth operations and on-time completion of our agreements.

For more on our offerings, get in touch with us and we would be happy to assist.

"A COMPANY BUILT ON PRECISE QUALITY"

It is the people behind us who distinguish us, association of intellectual talent that shapes us and leads transformation. People of the highest calibers and inspired workforce is the backbone of SDS.

SDS team involve qualified and experienced personnel. They are Geotechnical Engineers, Civil Engineers, Geologists, Surveyors, Site Supervisors, Draftsmen, Field Technicians and Industry Professional Engineers who are encouraged to interact, learn and excel. In addition, the firm operates from a fully equipped office with dedicated team which demonstrates a strong personal character and willingness to work within both urban and remote areas.

On our part, SDS inspire these people to improve their skills in domain through in-house workshops and external programs where they gain exposure to art of state methodology, developed technology, mechanisms and standards.

SERVICES OFFERED



SURVEY SERVICES:

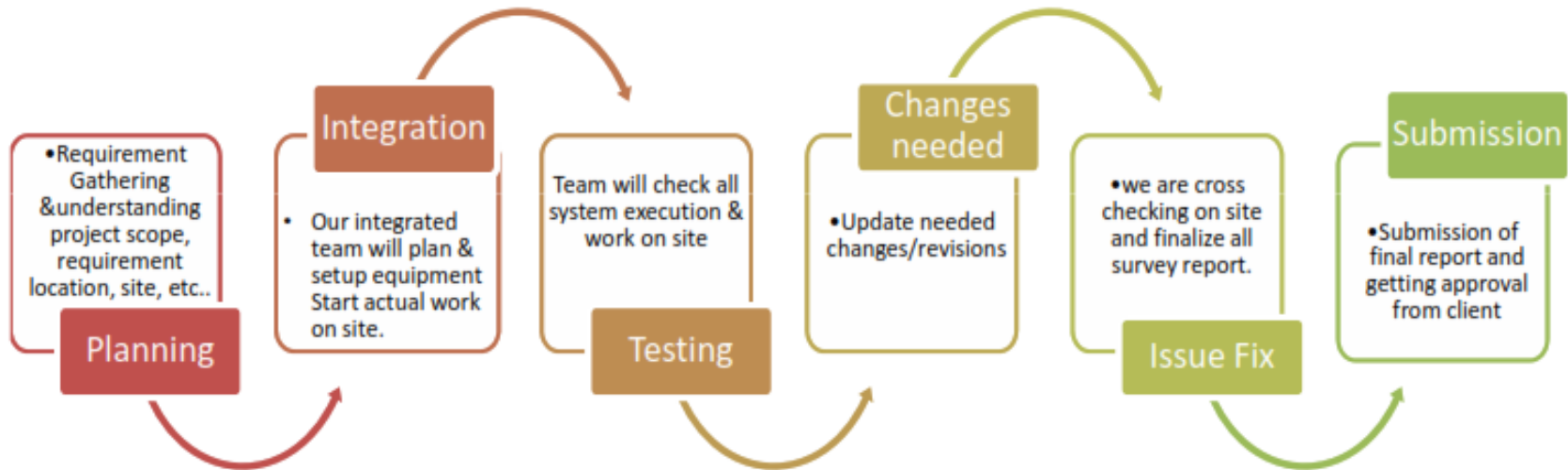
- Drone Survey
- Topographical Survey
- Detail Engineering Survey
- Contour Survey
- Route Survey
- Transmission Line Survey
- Railway Engineering Survey
- Command Survey
- Industrial Survey
- Cadastral Survey
- Road & Bridges Survey
- DGPS Survey
- Estimation of Earth Work Quantities
- Solar panel survey work Tunnel Survey
- GIS and Digital Mapping
- High Rise Building Services
- Hire of Survey instruments
(GPS & TOTAL STATION)

INVESTIGATION:

- **Geotechnical Investigation**
 - ✓ Augur Boring
 - ✓ Wash Boring
 - ✓ Rotary Mud Circulation Drilling
 - ✓ Route Survey
- **Mineral Exploration**
- **GI Instrumentation**
- **Drilling & Grouting**
- **DTH Drilling**
- **Sampling**
 - ✓ Open Tube Sampling
 - ✓ Double/Triple Tube Core Barrels
 - ✓ Undisturbed Sampling
 - ✓ Water Sampling
- **NABL Laboratory Testing Facility**
 - ✓ Soil, Water & Rock
- **Plate Load Test**
- **Non-Destructive Testing**
- **On-site Technical Assistance**
- **Hydrographic Survey**
- **Geotechnical Field Testing**
 - ✓ Standard Penetration Test
 - ✓ Vane Shear Test
 - ✓ CBR Test
 - ✓ Permeability Test
 - ✓ Pressure Meter Test
 - ✓ Core Cutter & Sand Replacement
- **Subsurface Sounding**
 - ✓ Static Cone Penetration Test
 - ✓ Dynamic Cone Penetration Test
 - ✓ CPTu/ECPT
- **Geophysical Test**
 - ✓ Electrical Resistivity
 - ✓ Seismic Refraction Survey
 - ✓ Cross Hole Seismic Test
 - ✓ Down Hole Seismic Test
 - ✓ MASW
 - ✓ Streaming Potential
 - ✓ Electromagnetic Survey

METHODOLOGY

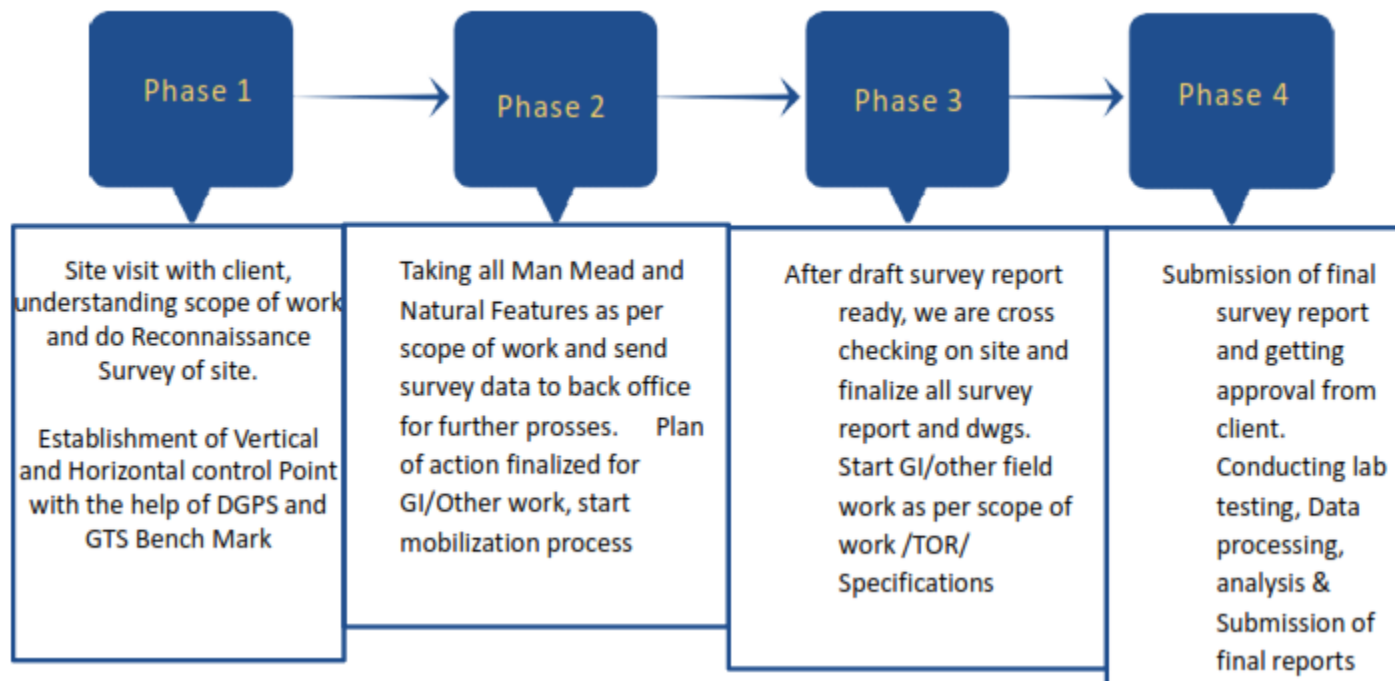
Below is the proposed end to end process flow of the Project Execution.



WORK PROCESS



We are the reputed organization engaged in offering reliable and effective Construction and Engineering Survey Services with the support of modern equipment's and experienced professionals. We deliver these services in prompt, effective and streamlined manner. Our offered services are in accordance with the client's requirements and international standards of quality:



GEOTECHNICAL INVESTIGATION

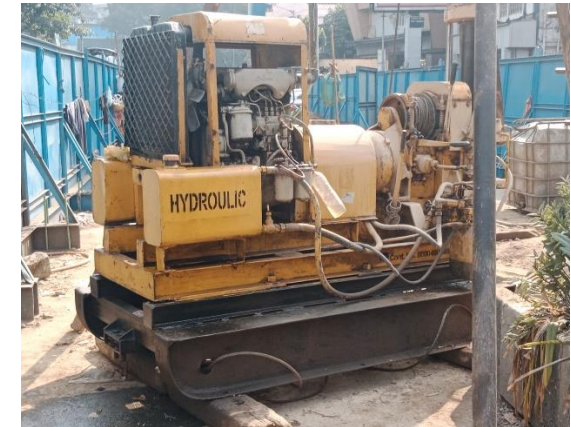
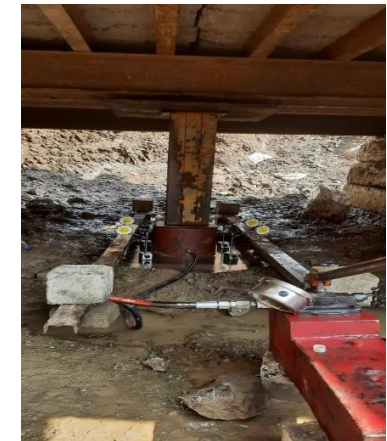


PLATE LOAD TEST



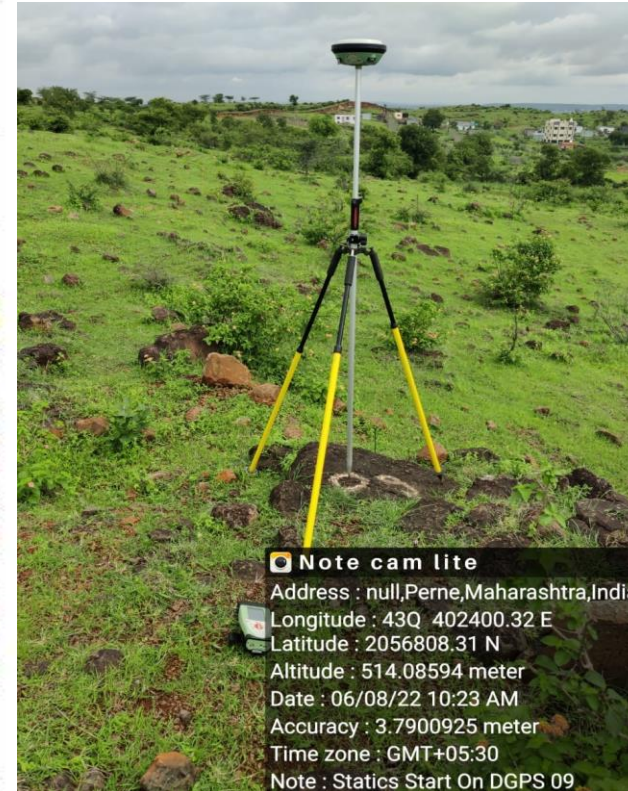
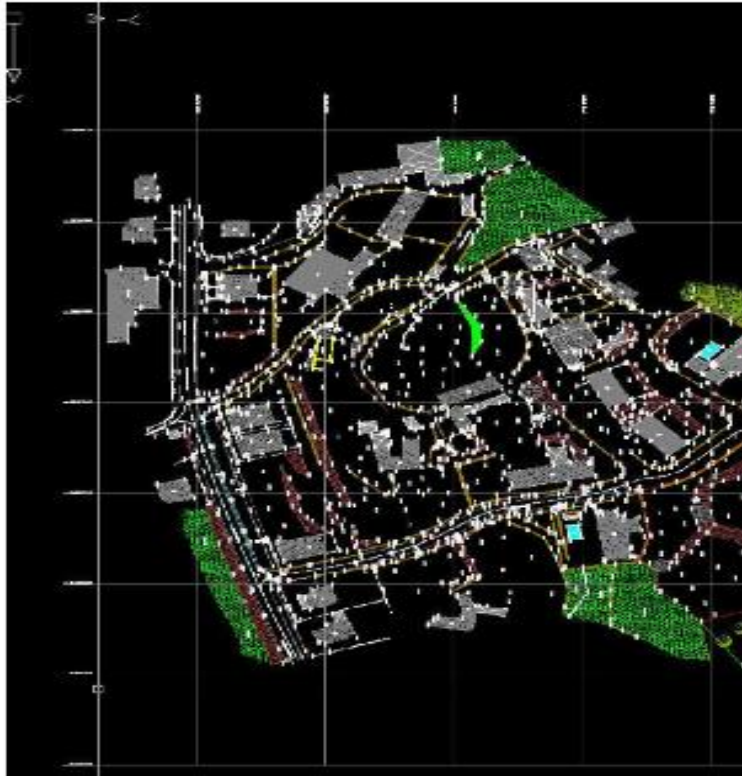
ELECTRIC RESISTIVITY TEST



DRONE SURVEY



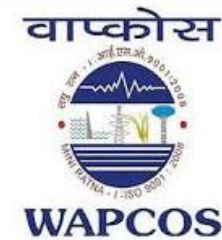
GIS SURVEY



CLIENTEL



adani



SDS SURVEYORS & ENGINEERS PVT LTD. | www.sdsepl.in | project@sdsepl.in | info@sdsepl.in

THANK YOU



Write us:

✉ info@sdsepl.in / project@sdsepl.in

🌐 **Visit us:**

www.sdsepl.in

📍 **Reach Us:**

**Office No 12, 2nd Floor, P. S. Anagan Society,
Magarpatta South Gate, Hadapsar, Pune 411028**



Mr. Shakti Dongre: 09657977743

Mr. Dnyaneshwar Yeklare: 09766190408

Mr. Suresh Gurav: 09766342701

Mr. D. J. Mahajan: 08419958450

SDS SURVEYORS & ENGINEERS PVT LTD. | www.sdsepl.in | project@sdsepl.in | info@sdsepl.in